

CHICAGO REFLECTIONS



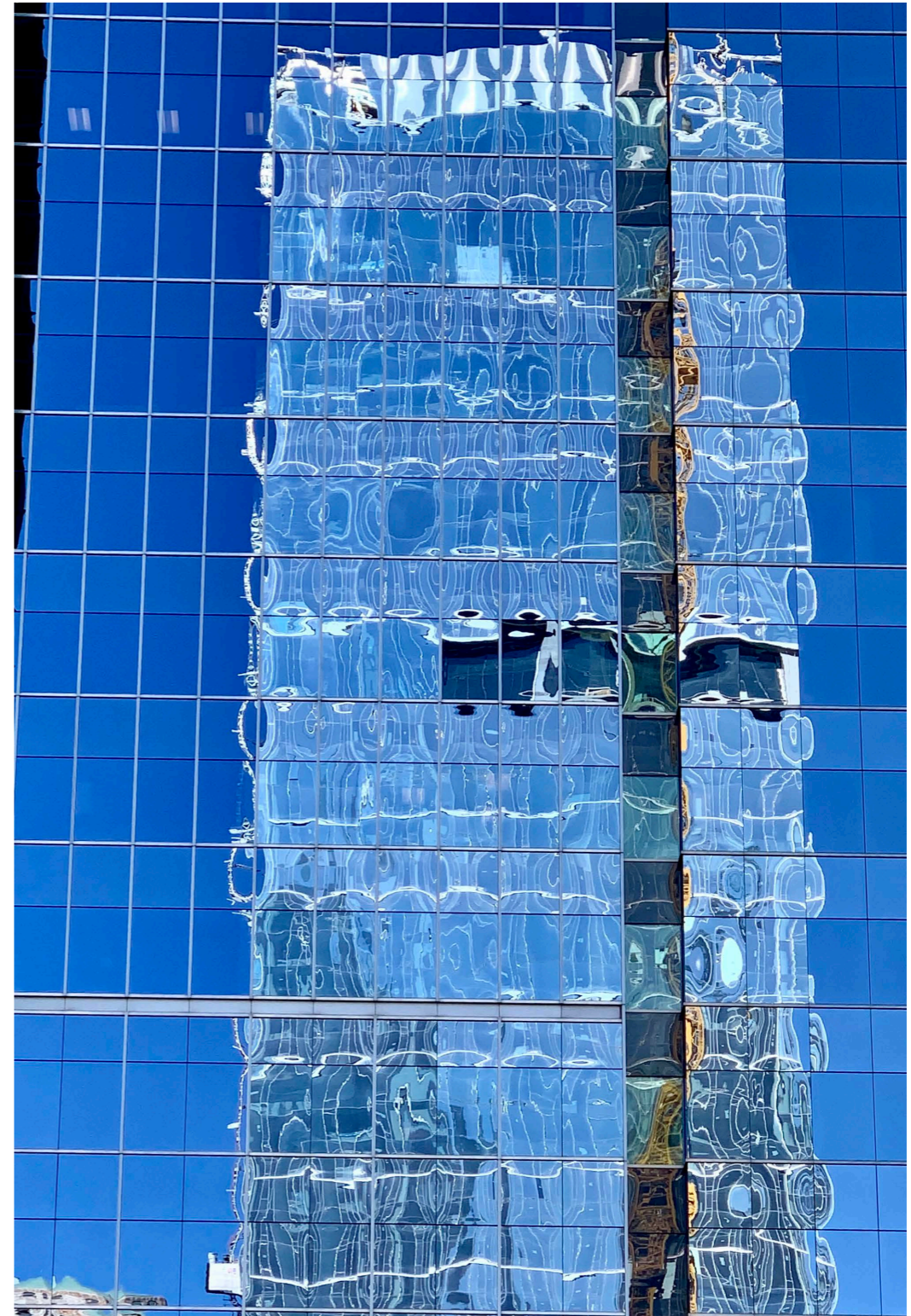
S.A. 10/23

REFLECTIONS ARE SPECIAL. THE WORD ITSELF IS BEAUTIFUL AND COMPLEX. WHEN WE REFLECT ON SOMETHING WITHIN OURSELVES, WE CONTEMPLATE THE MEANING OF IT.

WE LITERALLY REFLECT - ON AN EXPERIENCE, ON AN EMOTION, ON A RELATIONSHIP, ON AN IMPORTANT PIECE OF INFORMATION, OR ON LIFE ITSELF. EVEN WHEN WE FIX OUR GAZE ON A PHYSICAL REFLECTION, IT OFTEN CAUSES US TO REFLECT ON THE REFLECTION BEFORE US.

CARL SANDBURG MOVED TO CHICAGO FROM MILWAUKEE IN 1912. TWO YEARS LATER HE WROTE THE POEM CHICAGO, WHICH BEGINS “HOG BUTCHER FOR THE WORLD...” HE DESCRIBED HIS POEM AS “A CHANT OF DEFIANCE BY CHICAGO... ITS DEFIANCE OF NEW YORK, BOSTON, PHILADELPHIA, LONDON, PARIS, BERLIN AND ROME.

MAY THESE REFLECTIONS HELP YOU REFLECT ON AND ENJOY THE AMAZING CITY OF CHICAGO.





CHICAGO IS A MAGICAL PLACE TO SEE AMAZING REFLECTIONS.
THERE ARE CANYONS PACKED SOLID WITH WALLS OF STEEL AND GLASS SKYSCRAPERS.



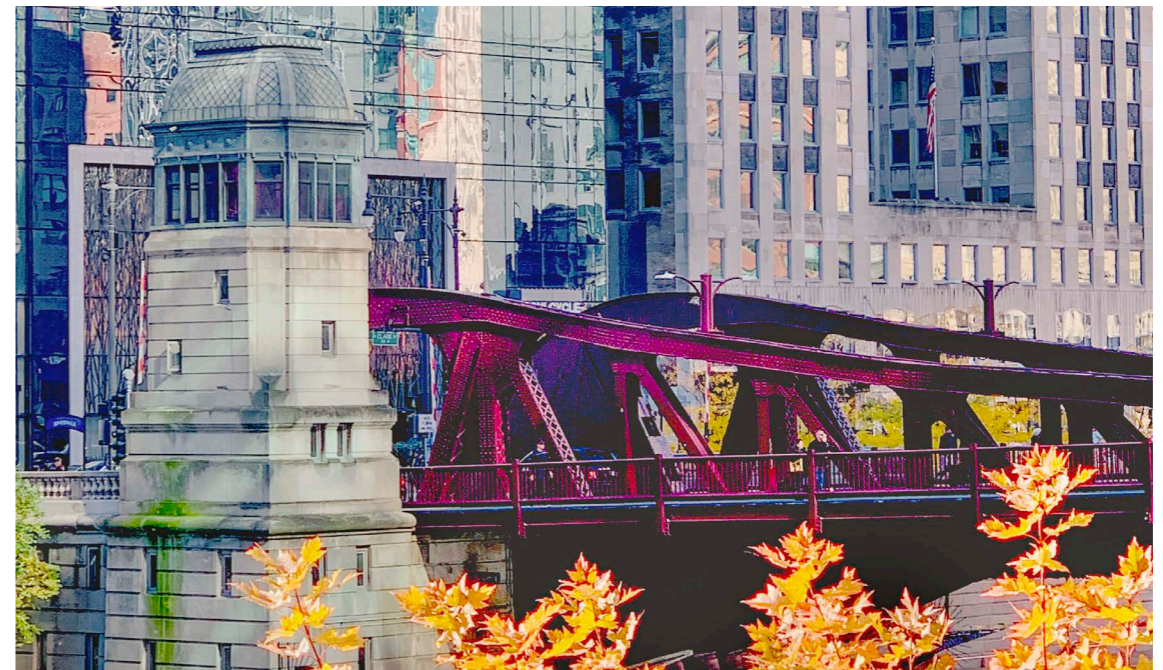


LOOKING WEST AT SUNRISE, WE SEE THE SUN REFLECTED IN A HIGH RISE UNDER A PASTEL CHICAGO SKY.



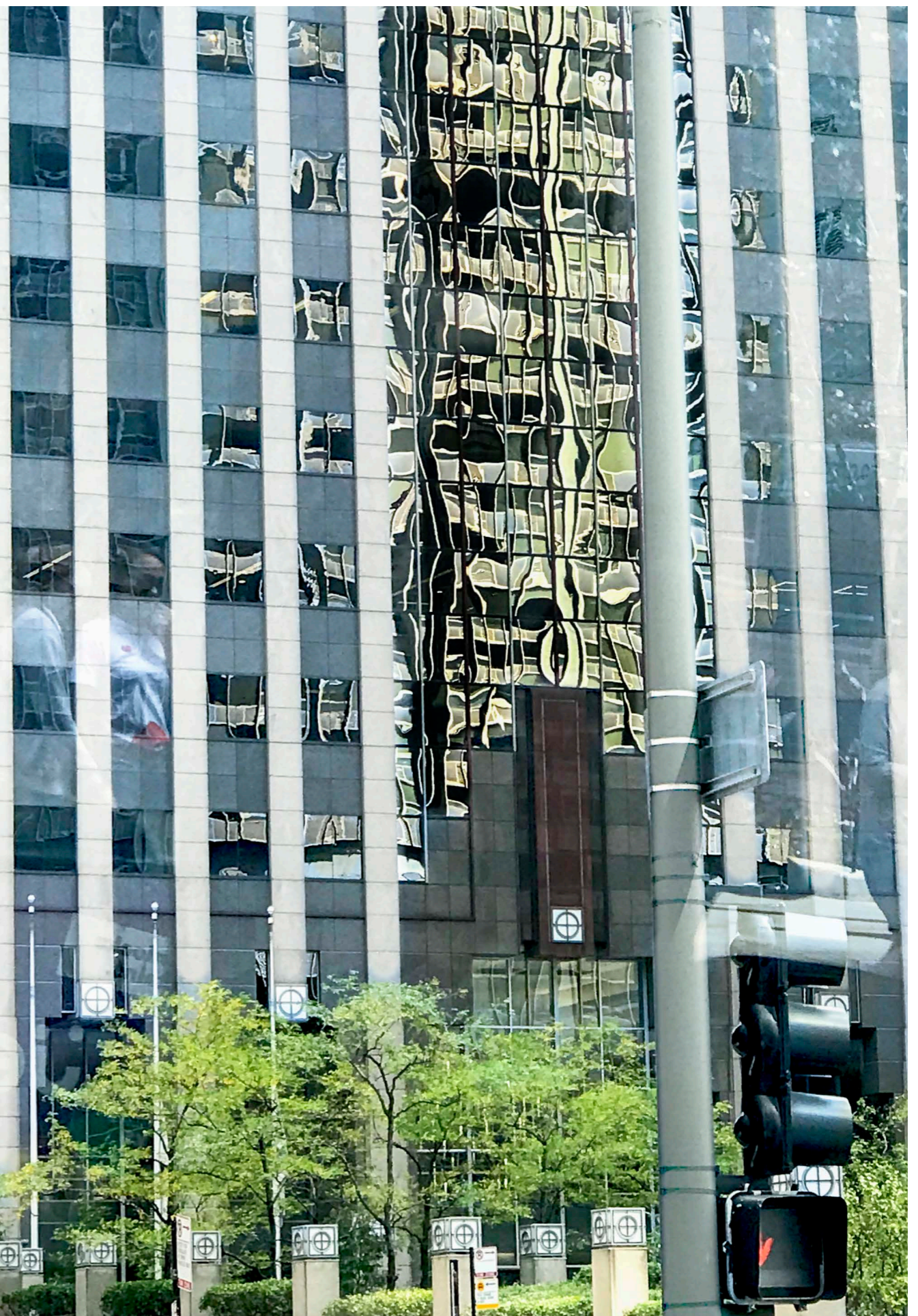


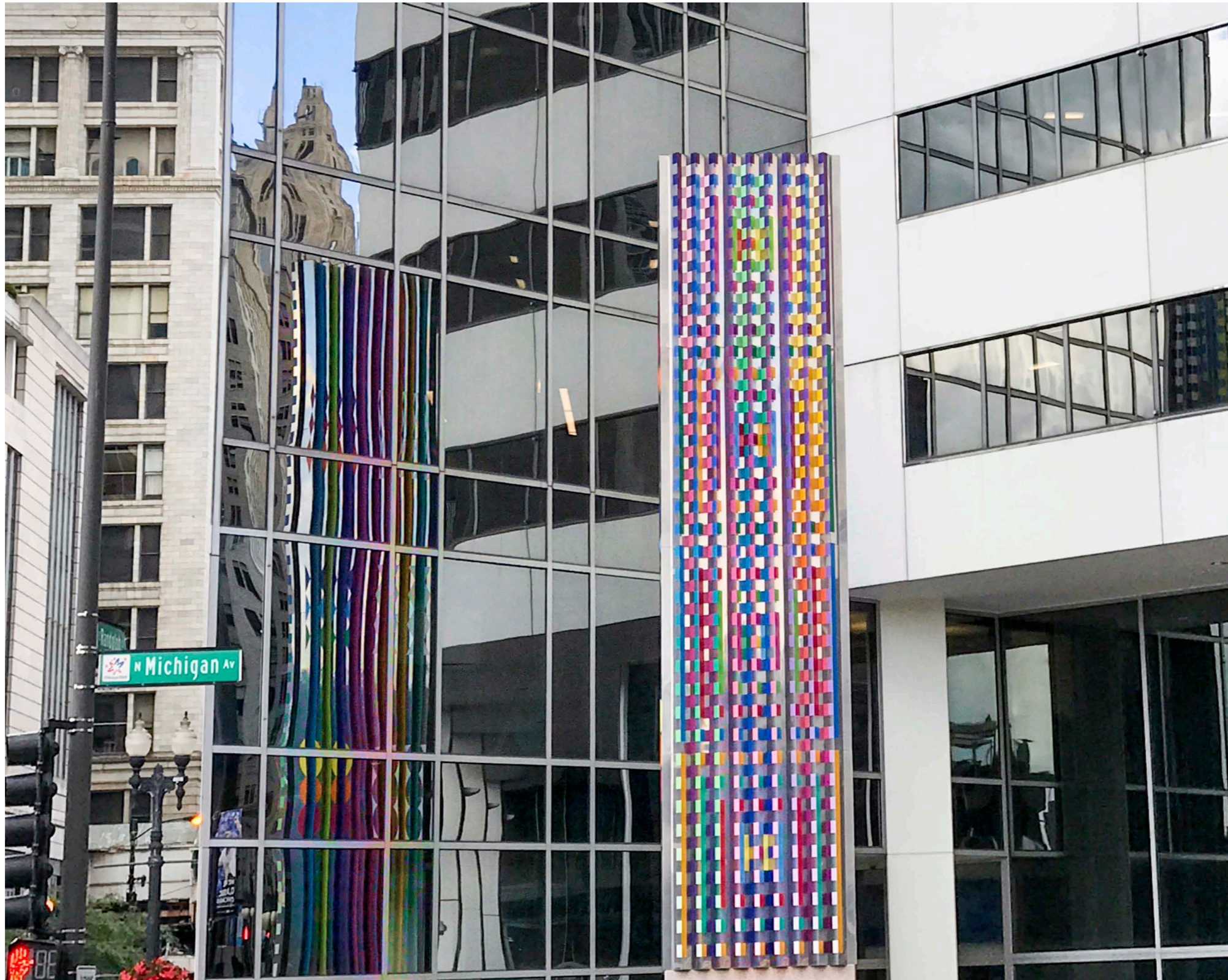




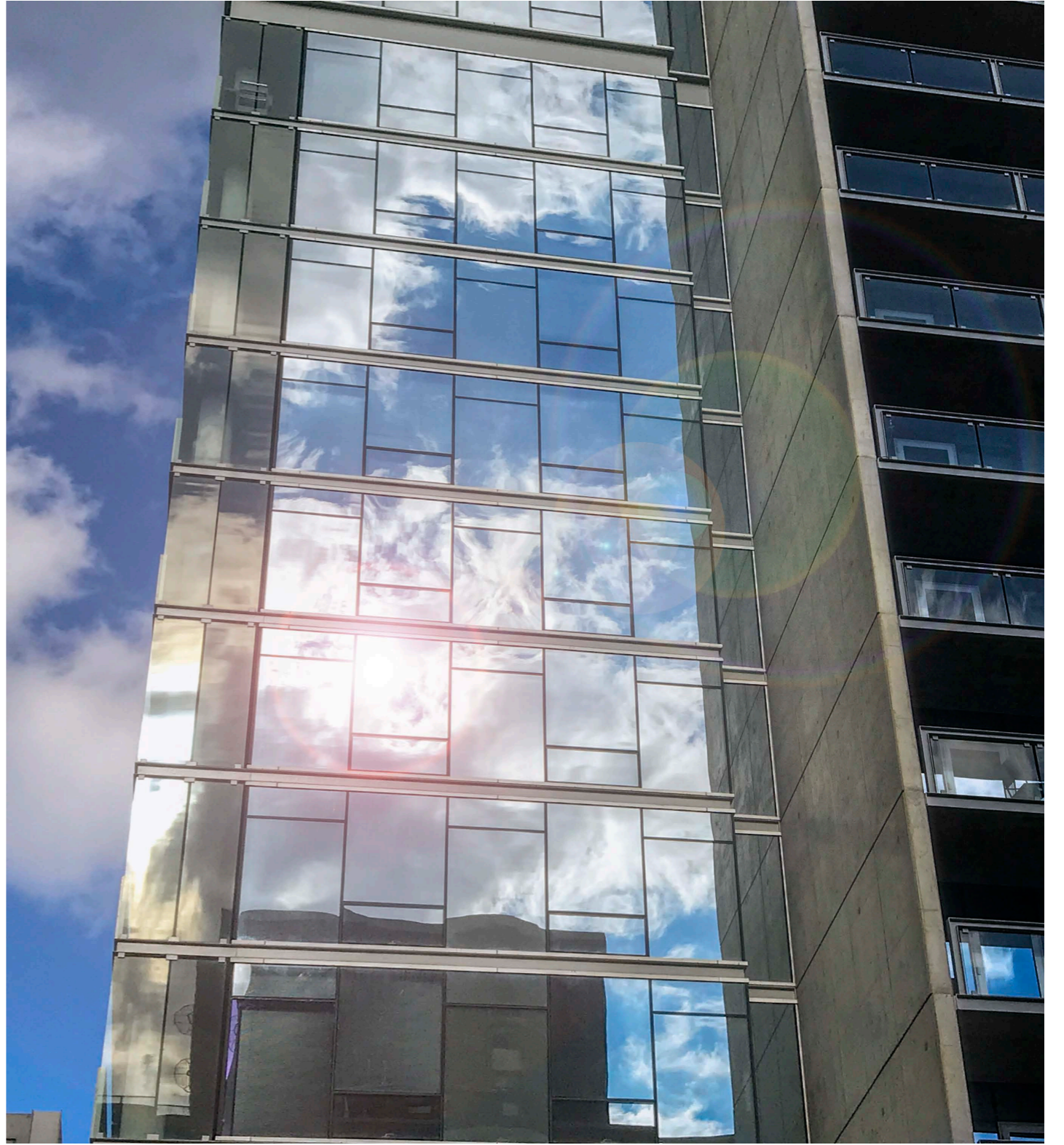
ONCE YOU BECOME AWARE OF THE REFLECTIONS ALL AROUND YOU WILL SEE THEM EVERYWHERE. YOU WILL NEVER AGAIN STOP SEEING THE BEAUTY OF REFLECTIONS.







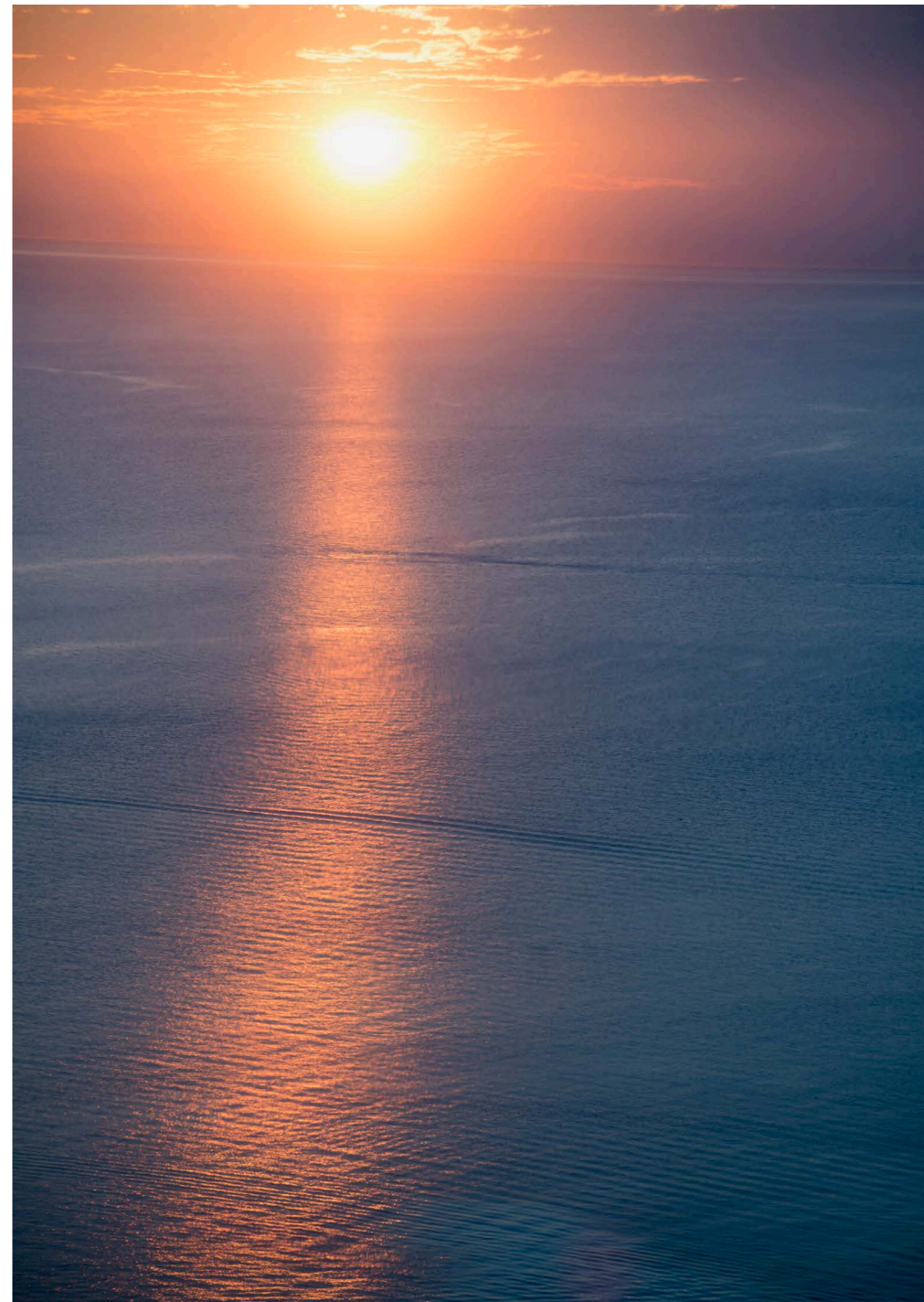




CHICAGO IS A MASSIVE CITY. IT HAS MORE THAN 200 NEIGHBORHOODS CONTAINED WITHIN 77 COMMUNITIES, THE THIRD-LARGEST POPULATION IN THE UNITED STATES, MORE THAN 200 THEATER COMPANIES, AND 570 PARKS COVERING MORE THAN 7,600 ACRES,

BEGINNING AT ITS EASTERN EDGE, CHICAGO CLAIMS ITS SHARE OF THE 1650 MILES OF LAKE MICHIGAN'S SHORELINE.

WATCH REFLECTIONS OF THE SUN AS IT RISES OVER THE LAKE ON CLEAR MORNINGS.

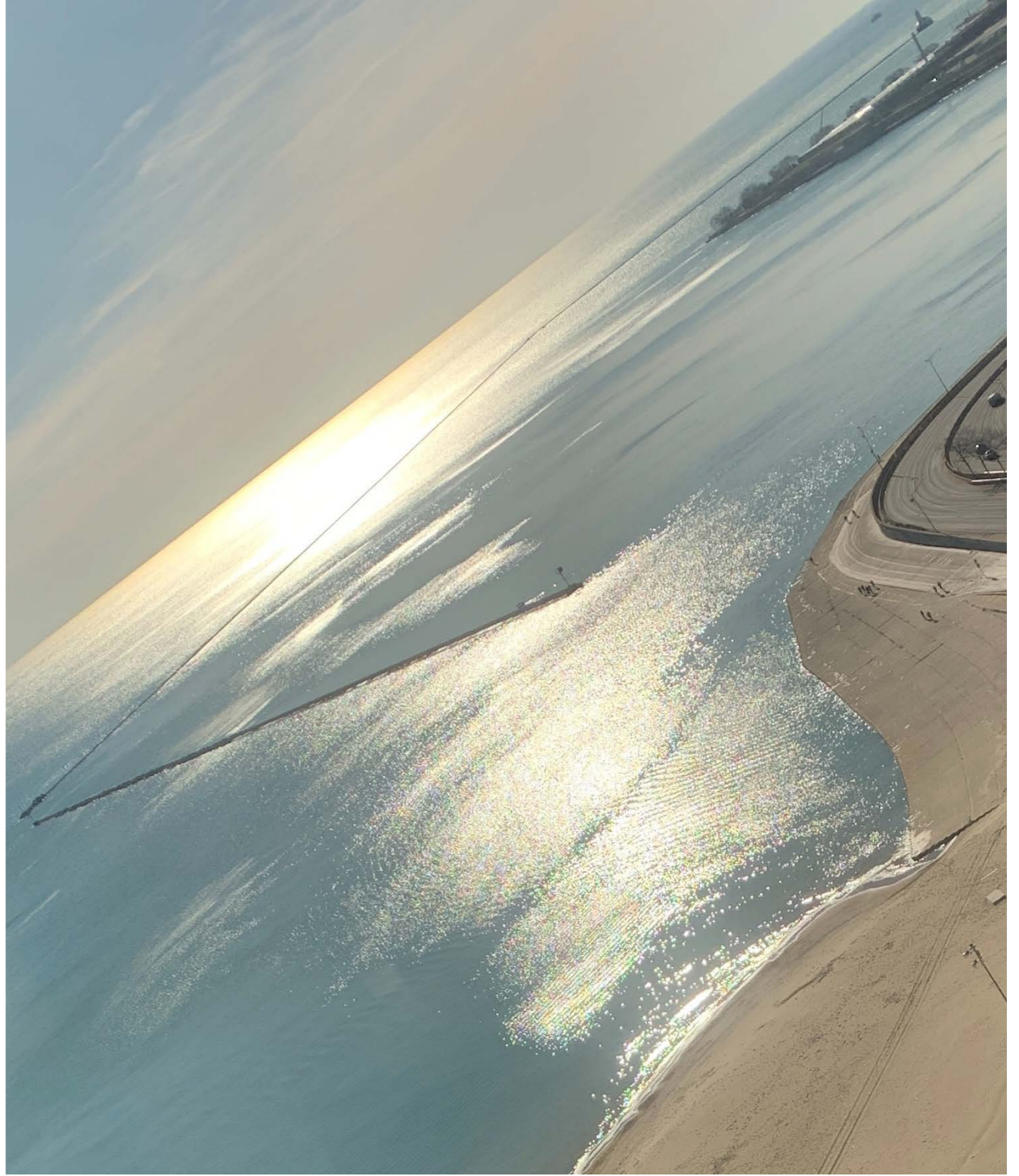
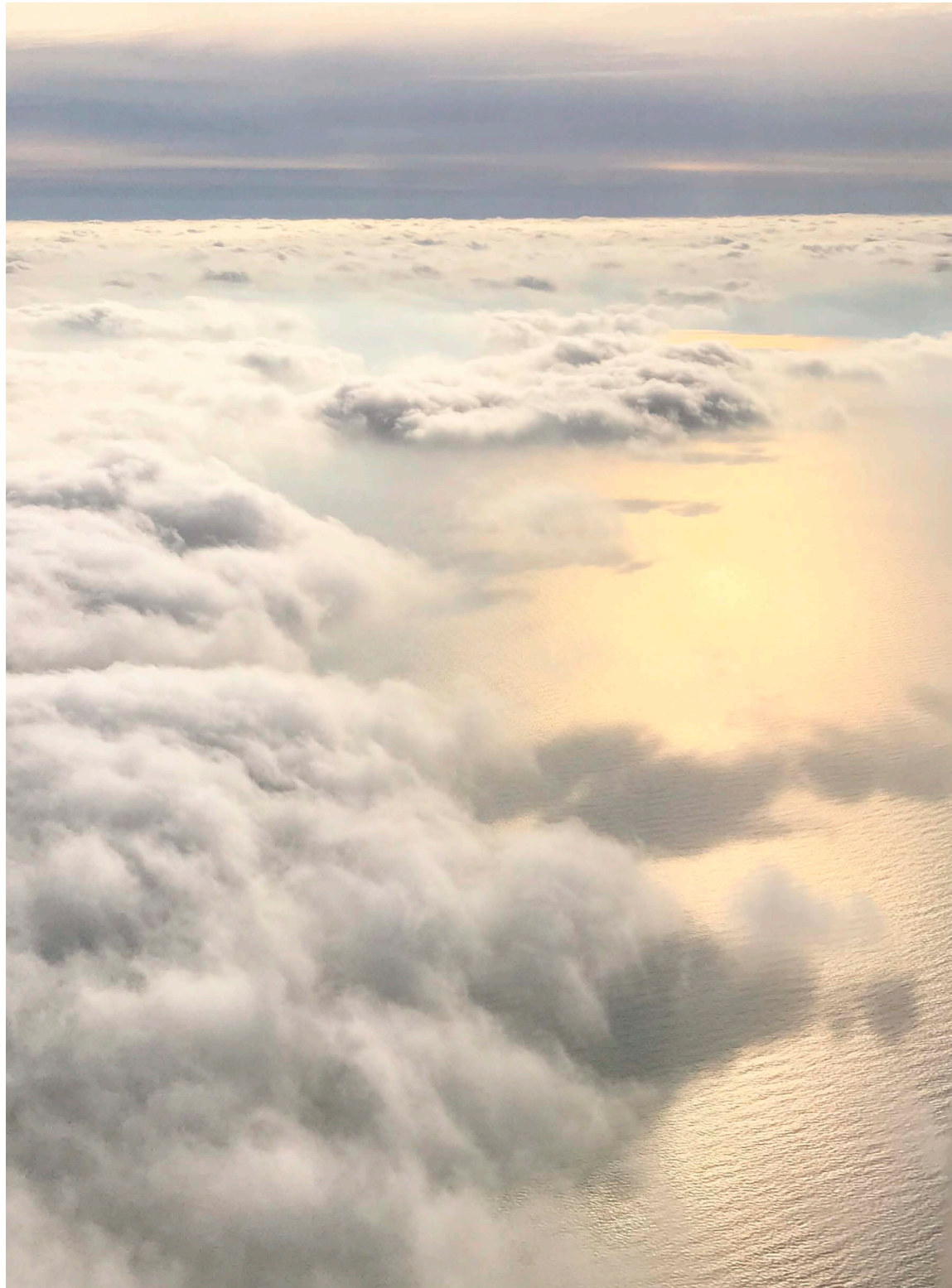




LIGHT AND SKY REFLECTED IN LAKE MICHIGAN









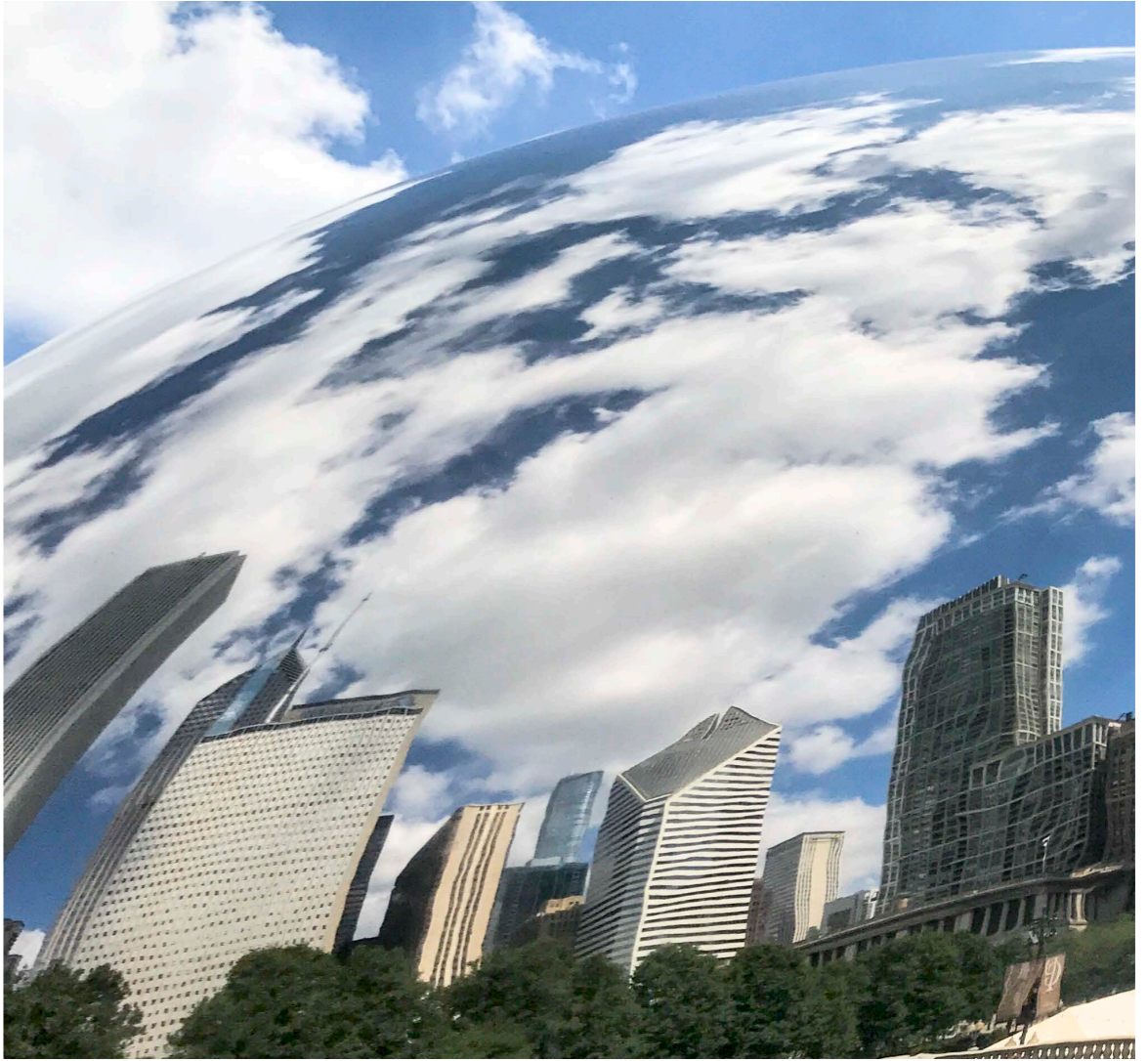
A MAGIC MOMENT CAPTURED IN THE STILLEST OF STILL
WATERS ALONG LAKE MICHIGAN'S SHORELINE.





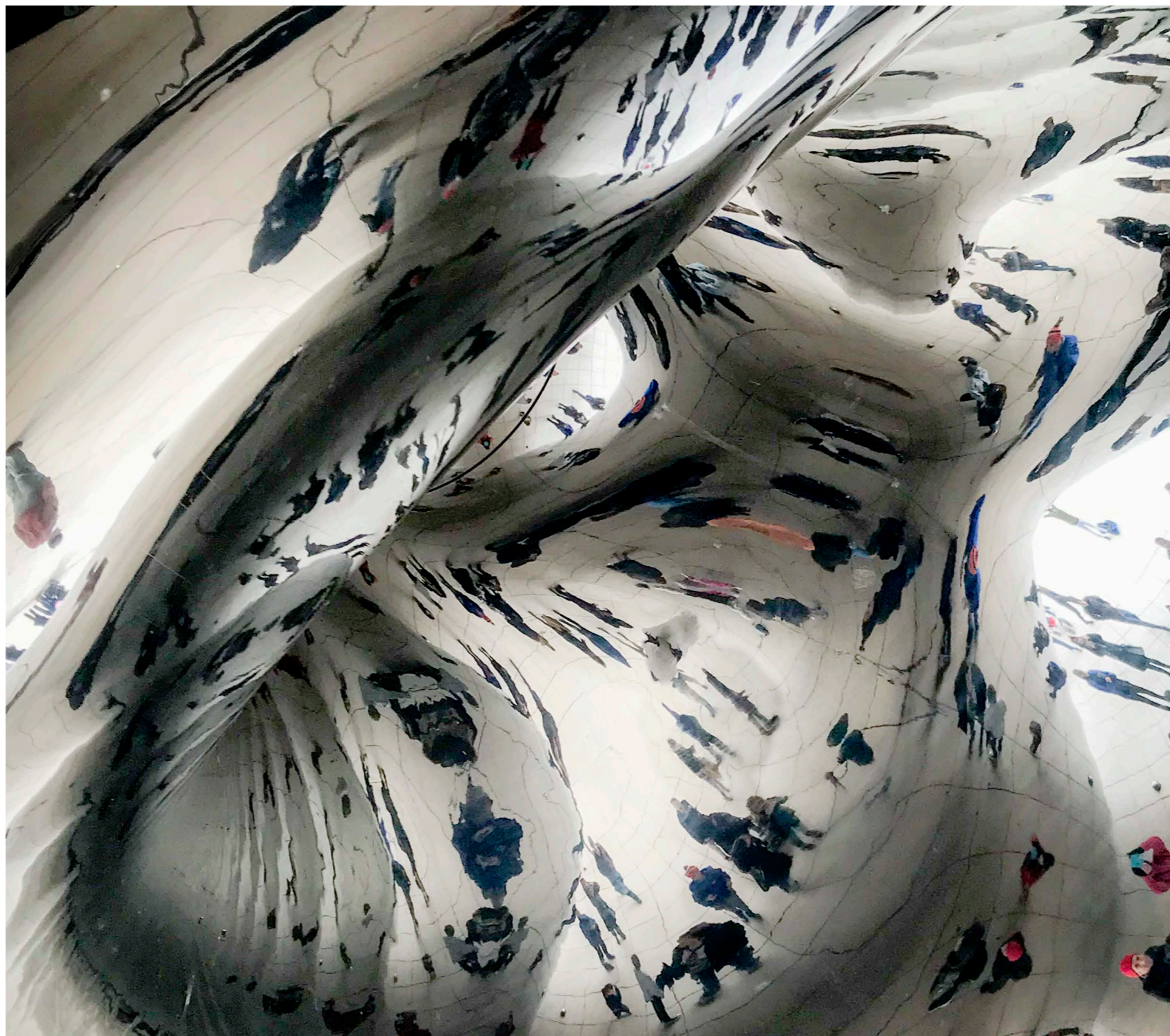
AND THEN THERE IS THE
ULTIMATE REFLECTIVE SOURCE
- CHICAGO'S 110-TON BEAN
STANDING BOTH STRONG AND
GRACEFUL AT THE ENTRANCE TO
MILLENNIUM PARK'S 25 ACRES.
INSPIRED BY LIQUID MERCURY,
THE SCULPTURE WAS BUILT TO
REFLECT BOTH THE SKY AND
CHICAGO'S SKYLINE WHILE ALSO
REFLECTING THE MILLIONS OF
PEOPLE MOVING AROUND THE
PARK.

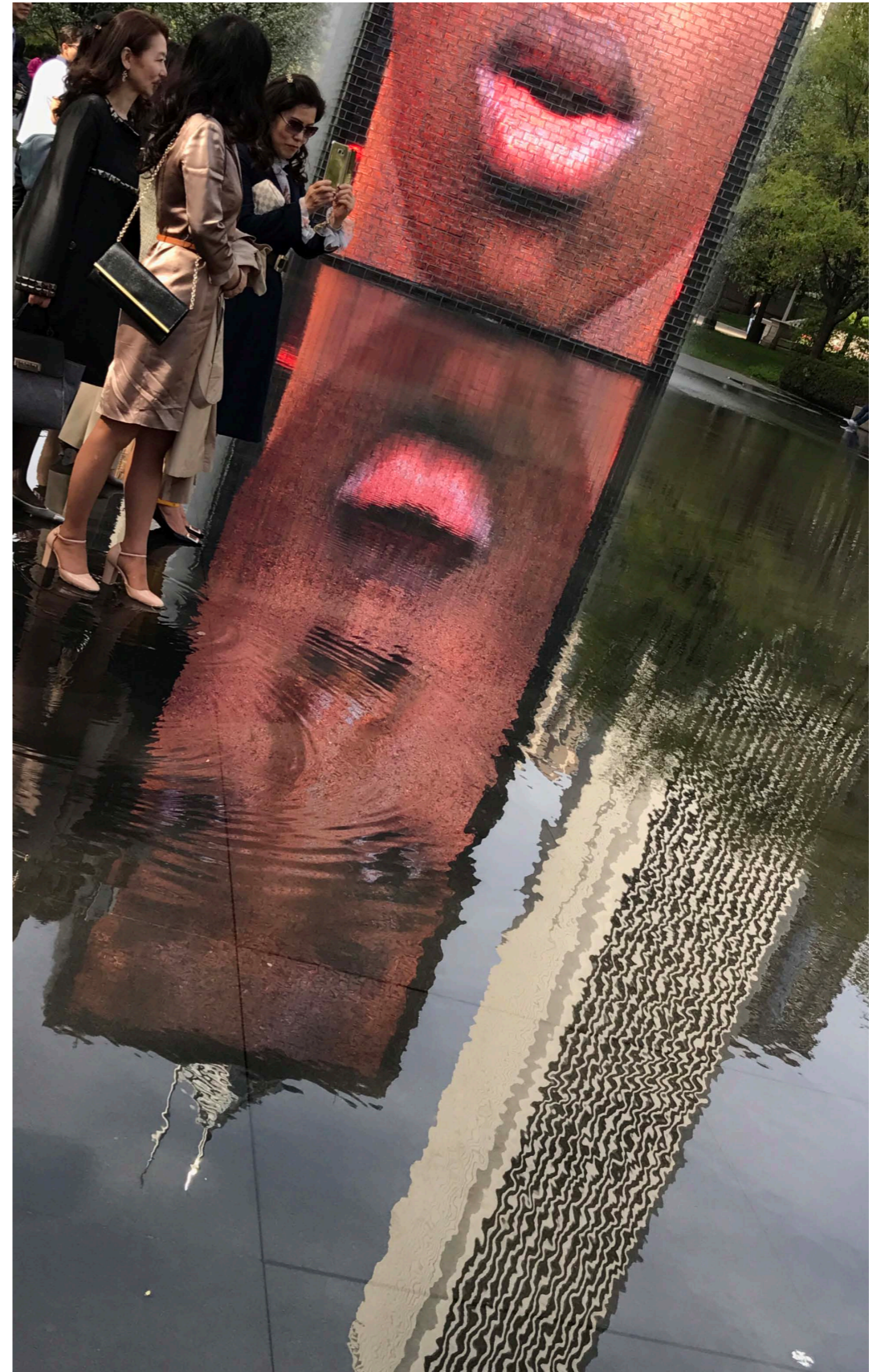


















AN OPTICAL ILLUSION IN MIRRORS AT THE LANGHAM HOTEL.



CARS REFLECT THE WORLD AROUND THEM. AS THEY TRAVEL DOWN STREETS AND HIGHWAYS THEY CAPTURE THE SCENERY FLYING BY.

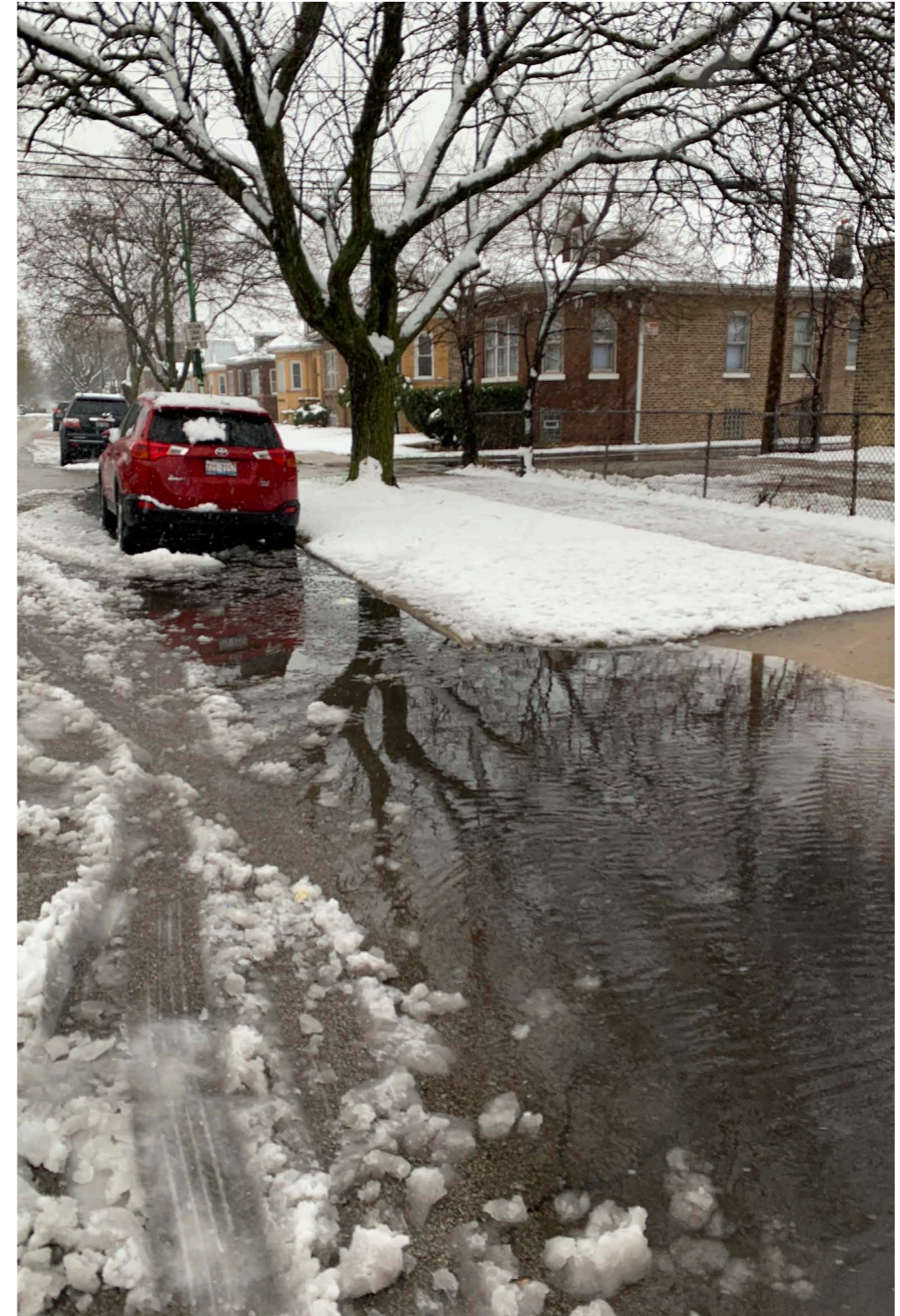
PARKED ALONG CHICAGO'S MILES OF CURB, THEY BECOME ONE WITH THE CITY AROUND THEM. REFLECTING ON THE WINDSHIELD OR HOOD OR DOORS, THE EYE CAPTURES CAR AND REFLECTIONS AS ONE.







THE REFLECTION BEFORE OUR EYES IS ITSELF COMPLEX - WHERE DOES THE OBJECT
HOLDING THE REFLECTION END AND WHERE DOES THE REFLECTED OBJECT BEGIN.
IT IS A WAY OF SEEING TWO THINGS AT THE SAME TIME, AND SO IT IS A MOMENT IN TIME.



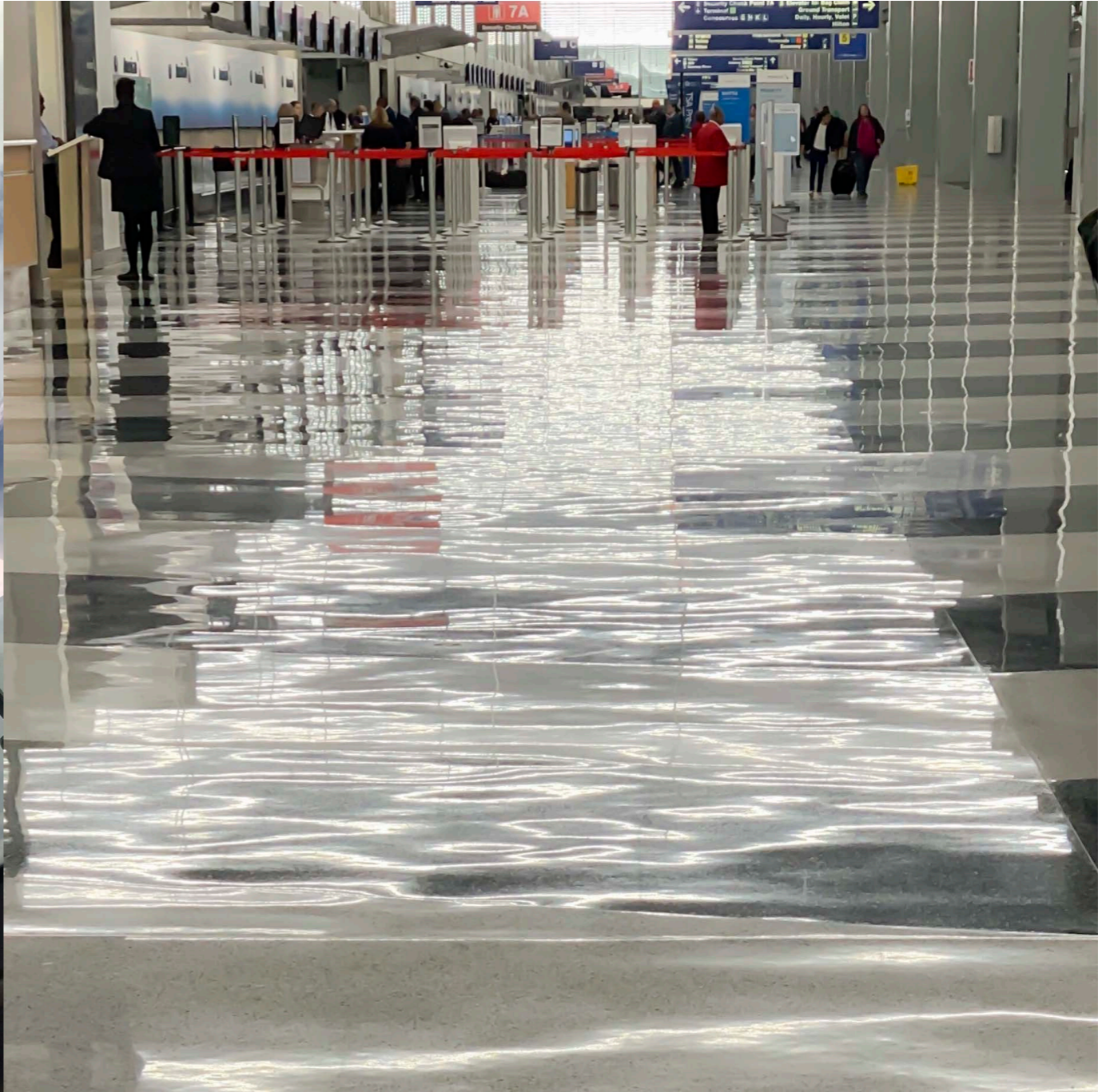
DO NOT GET THE IMPRESSION THAT CHICAGO CONSISTS ONLY OF TALL BUILDINGS, THE LAKE AND TOURISTY SPOTS. LIKE ALL BIG CITIES CHICAGO IS MADE UP OF NEIGHBORHOODS, EACH WITH IT'S OWN LOOK AND PERSONALITY. REFLECTIONS MAY BE HARDER TO FIND OR DIFFERENT IN THESE NEIGHBORHOODS BUT THEY ABOUND.





THE REFLECTION IS LIKELY TO BE FLEETING. PEOPLE PASS, CLOUDS MOVE, WATER RIPPLES, LIGHT CHANGES, THE WIND COMES AND GOES AND CARS LEAVE THEIR PLACES AT THE CURB.

WHEN YOU SEE A REFLECTION CAPTURE IT. YOU ARE FREEZING A UNIQUE IMAGE. YOU WILL NEVER SEE THAT SAME REFLECTION AGAIN.





IF YOU ARRIVE OR DEPART FROM O'HARE INTERNATIONAL AIRPORT AND ARE LUCKY ENOUGH TO BE IN THE UNITED TERMINAL, ENJOY THE LIGHT SHOW AND THEIR REFLECTIONS AS YOU STAND ON THE MOVING WALKWAY.



THE END

PHOTOS: SUSAN LEITH
MS.SUSAN.LEITH@GMAIL.COM
SUSANLEITH.COM

© 2020 S. LEITH
ALL RIGHTS RESERVED